



# **WSCA Safety Statistics for 2008**



Well Services Contractors Association

Safety Statistics

Summary Report

YEAR: 2008 to Dec

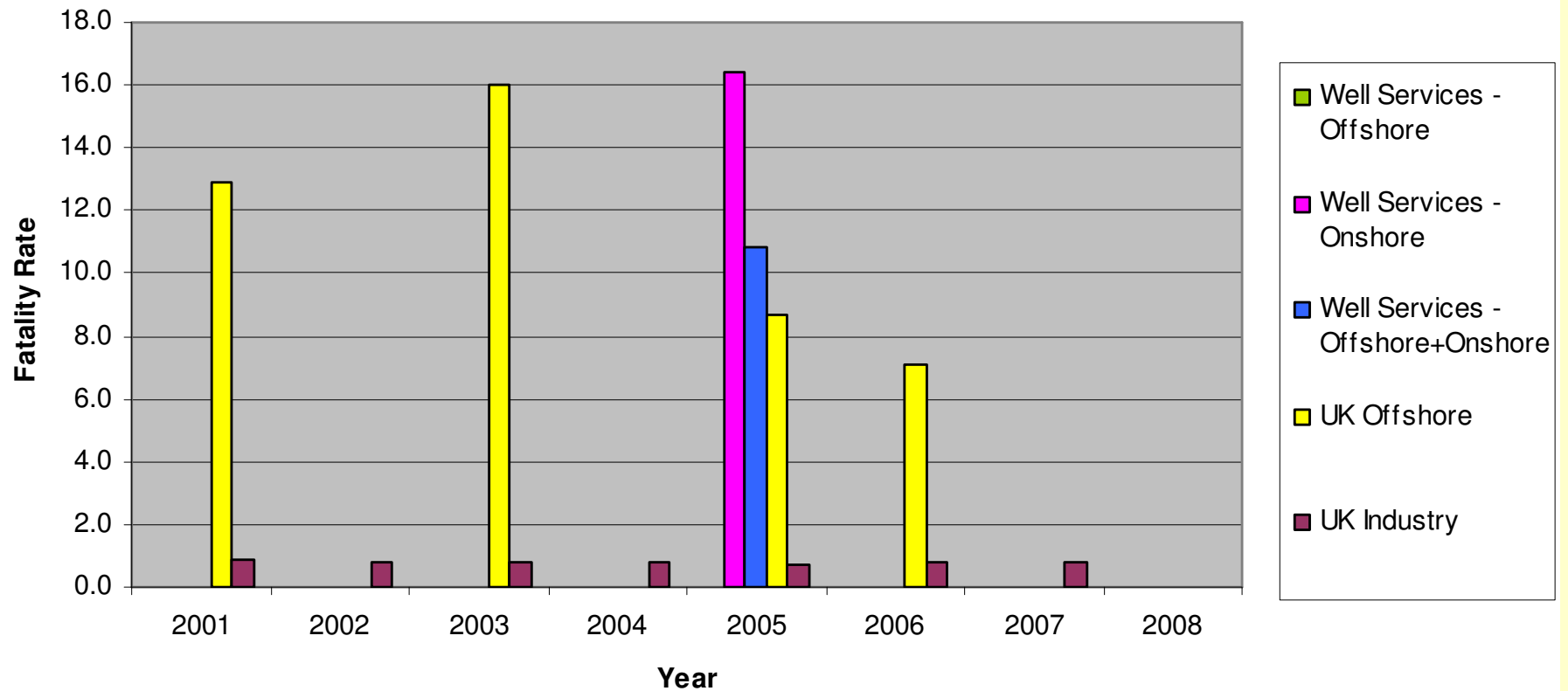
Employee Numbers:	Offshore	2858
	Onshore	7424

Record of accidents and near misses:

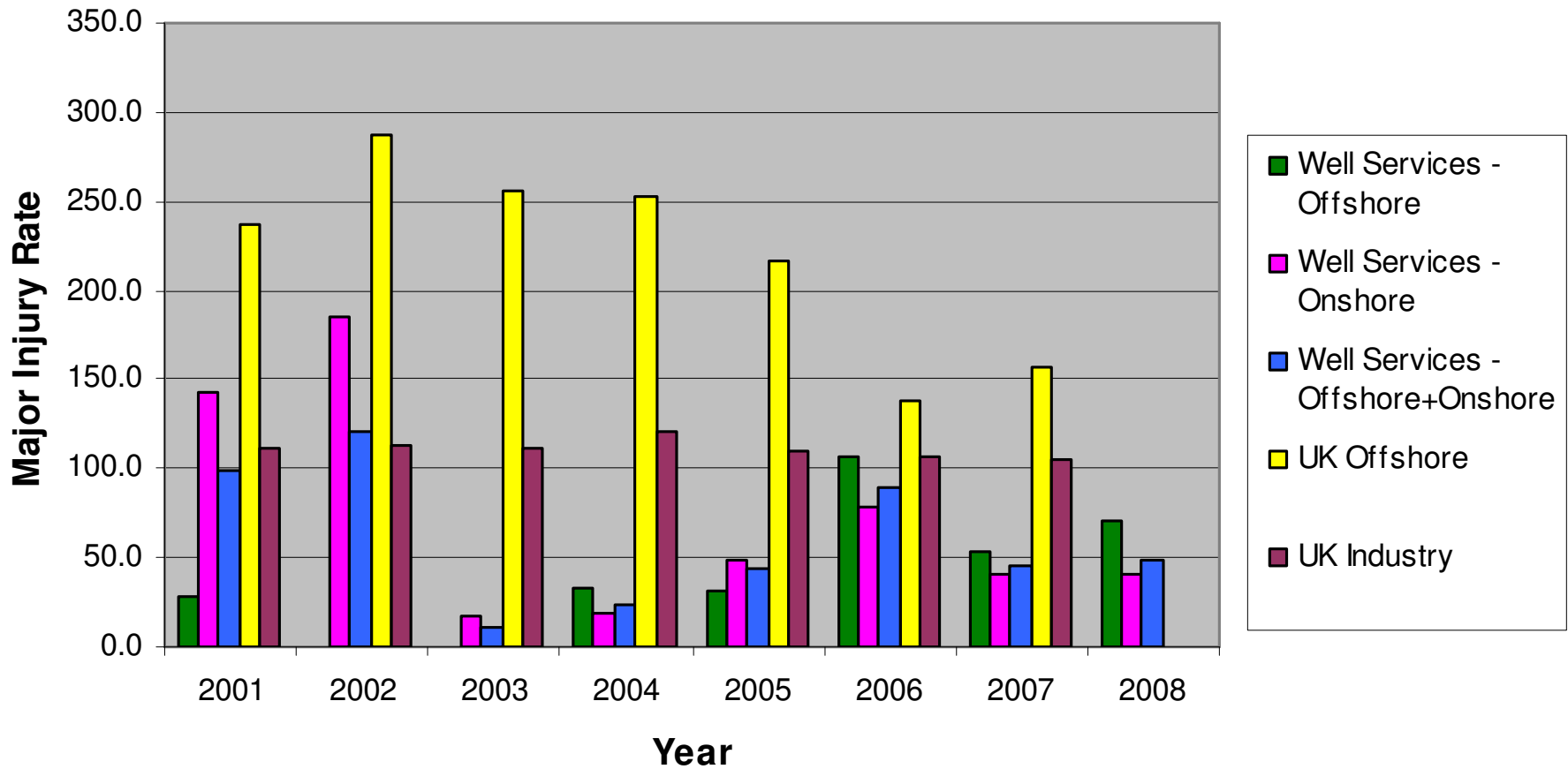
Injury incidents

	Total inc'ts	Days lost		Location Place of incident			Location of incident			
		Offshore Ops.	Onshore Ops.	Fixed installation	MODU	Onshore	At worksite	Inter location movement	Hotel/ domestic	RTA
<b>No of FATALITIES</b>	0			0	0	0	0	0	0	0
<b>No of DAYS AWAY FROM WORK cases</b>	43	274	459	1	6	36	41	1	1	0
<i>The information in the two rows below is that is reported under RIDDOR</i>										
of which this number were <b>MAJOR INJURIES</b>	5	90	78	0	2	3	4	1	0	0
and this number were <b>3-DAY INJURIES</b>	34	184	383	1	4	29	33	0	1	0
<b>No of TOTAL RECORDABLE INCIDENTS</b>	31	1	81	2	2	27	29	0	2	0
<b>No of FIRST AID CASES</b>	250	1	2	51	27	172	248	0	0	2
<b>Non-injury incidents</b>										
<b>No of DANGEROUS OCCURRENCES</b>	21			9	2	10	21	0	0	0
this cell shows those that were wire or coil breakages	8			5	2	1				
<b>SAFETY OBSERVATIONS recorded</b>	39845			12062	2678	25105				

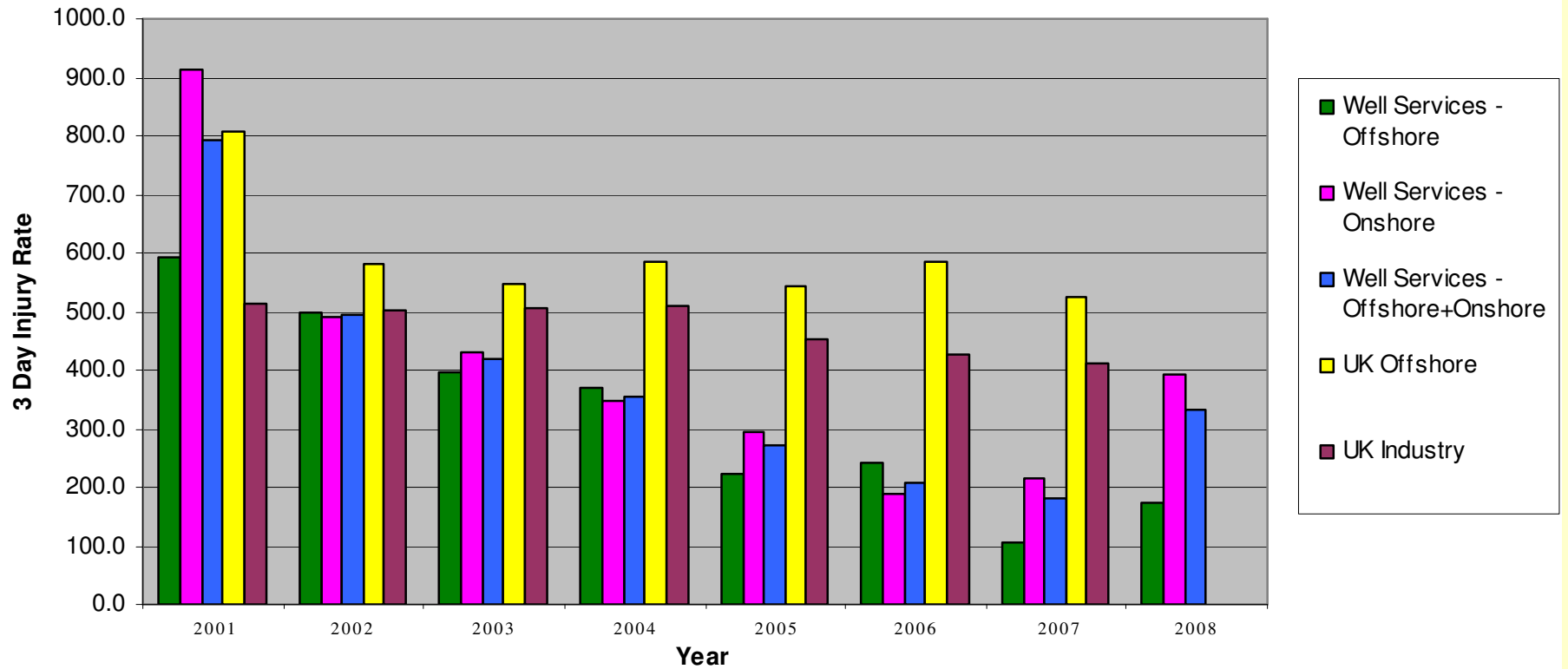
### Fatality Rates (per 100,000 people)



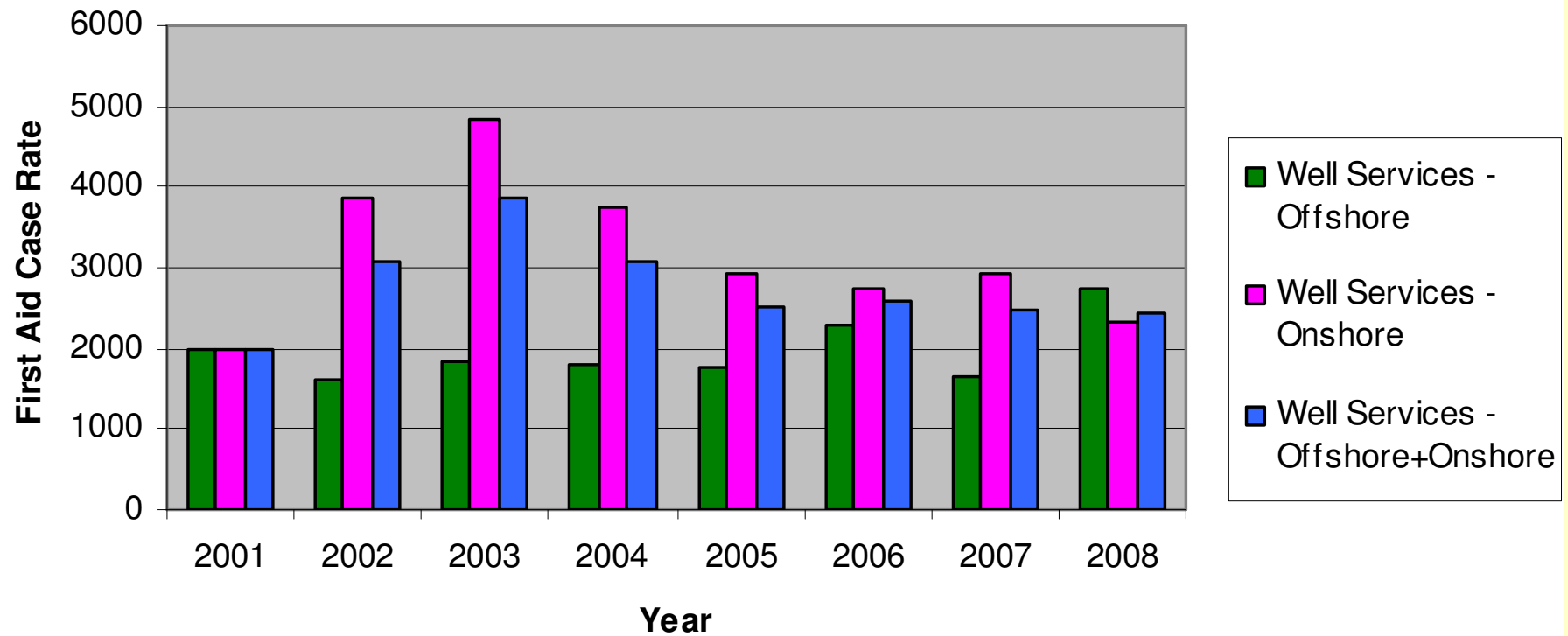
### Major Injury Rates (per 100,000 people)



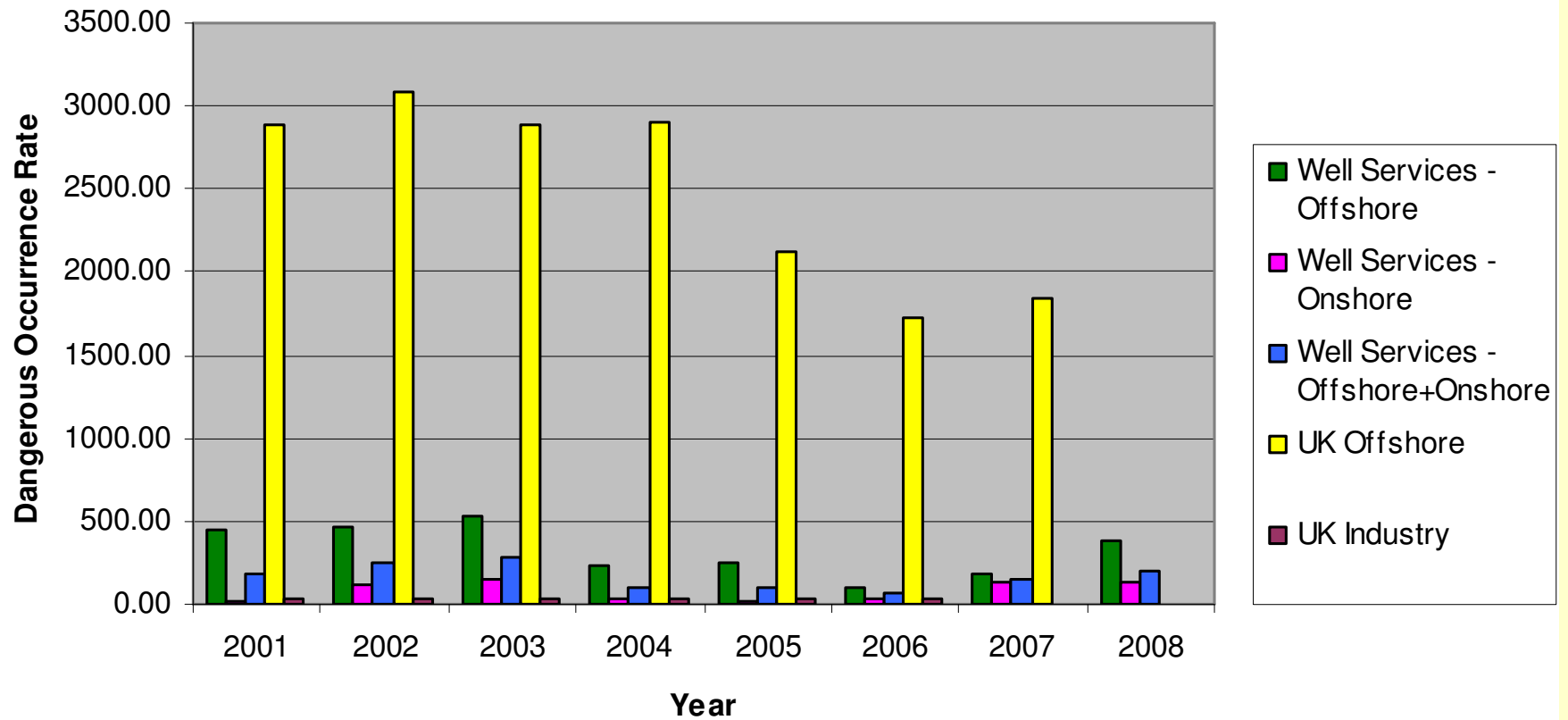
### 3 Day Injury Rates (per 100,000 people)



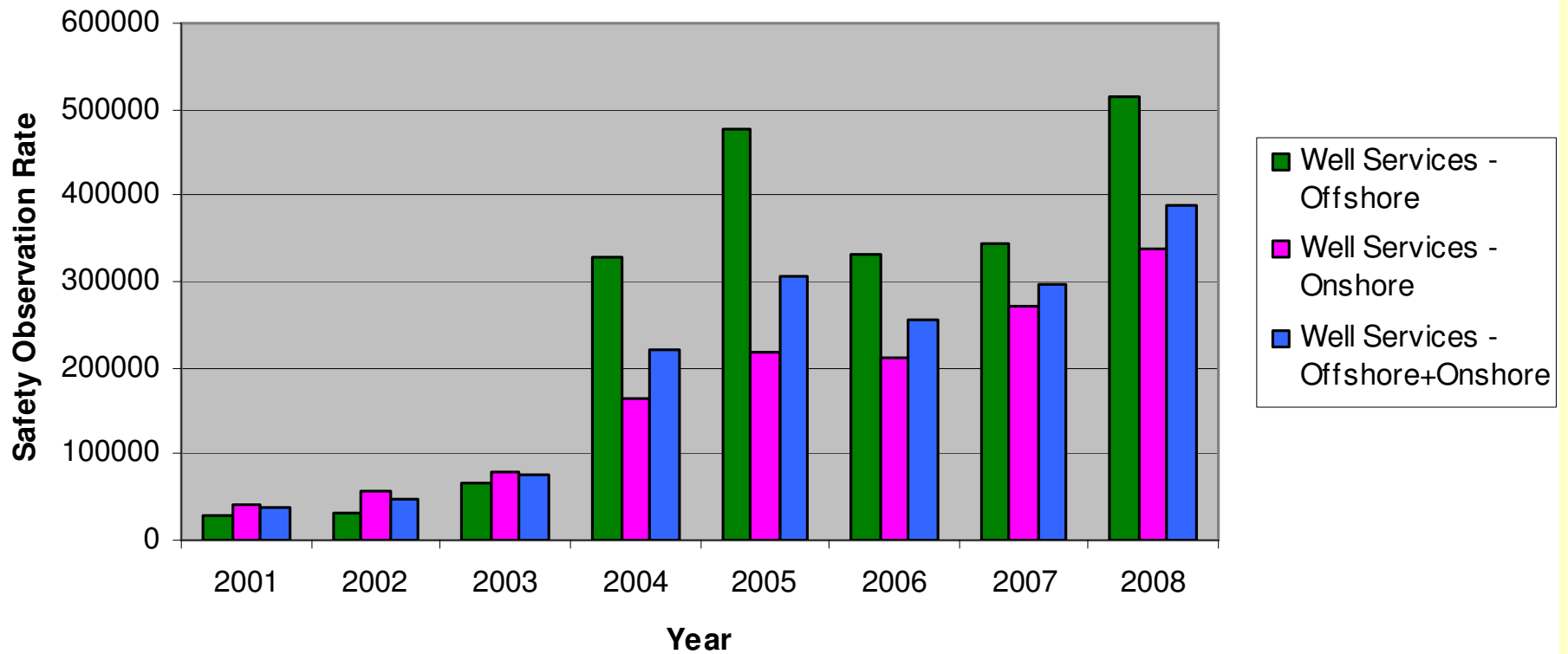
## First Aid Case Rates (per 100,000 people)



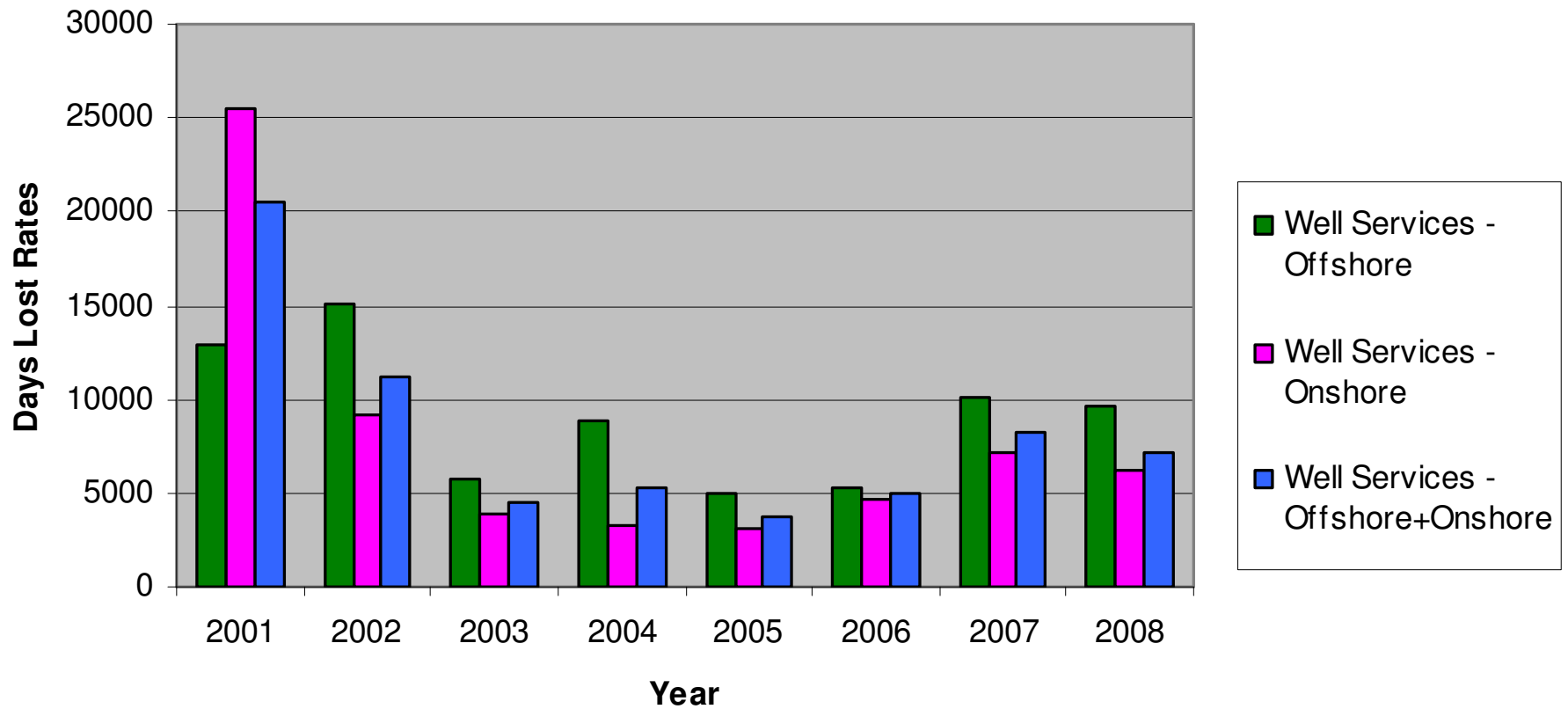
## Dangerous Occurrence Rates (per 100,000 people)



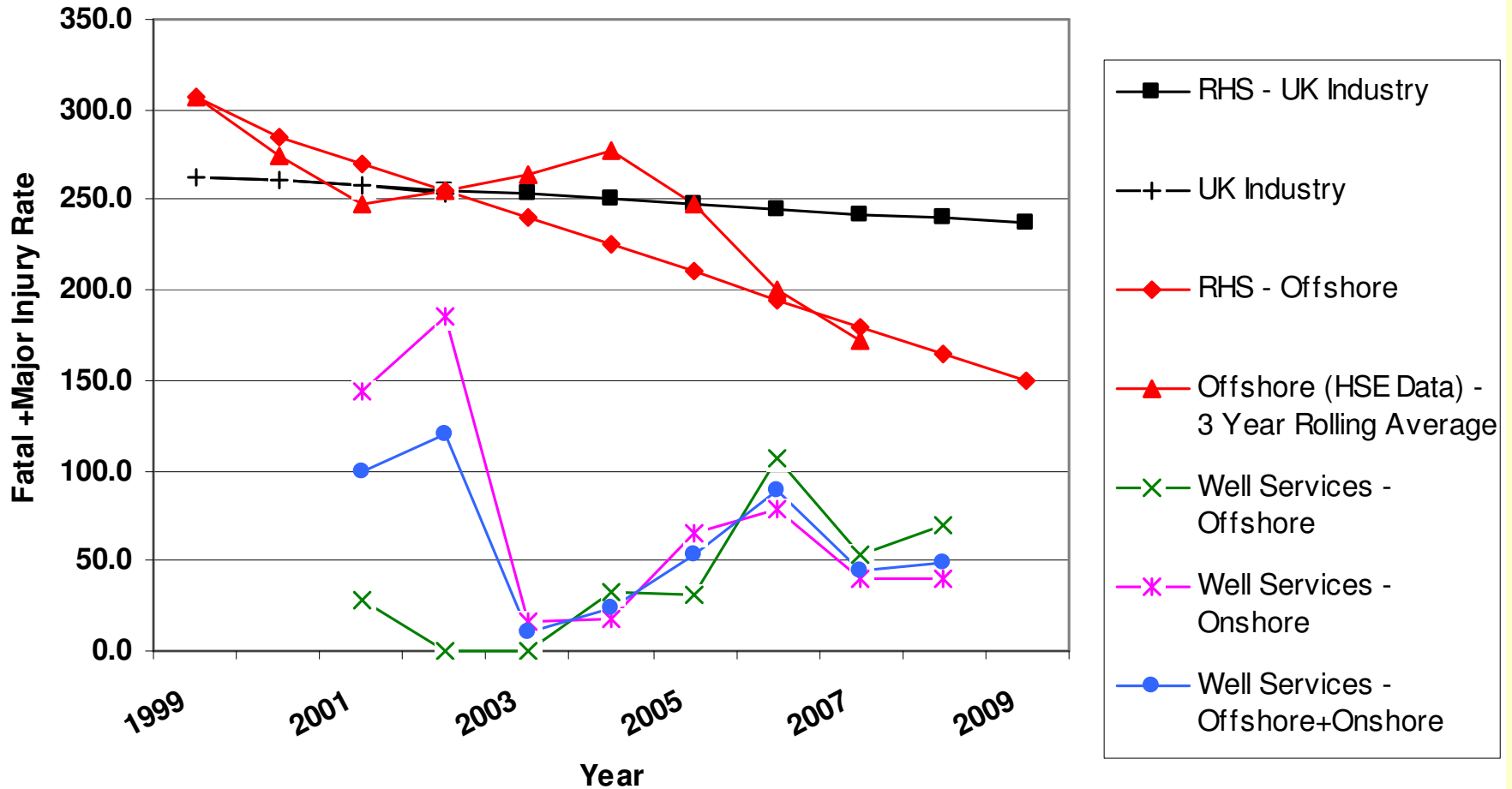
### Safety Observation Rate (per 100,000 people)



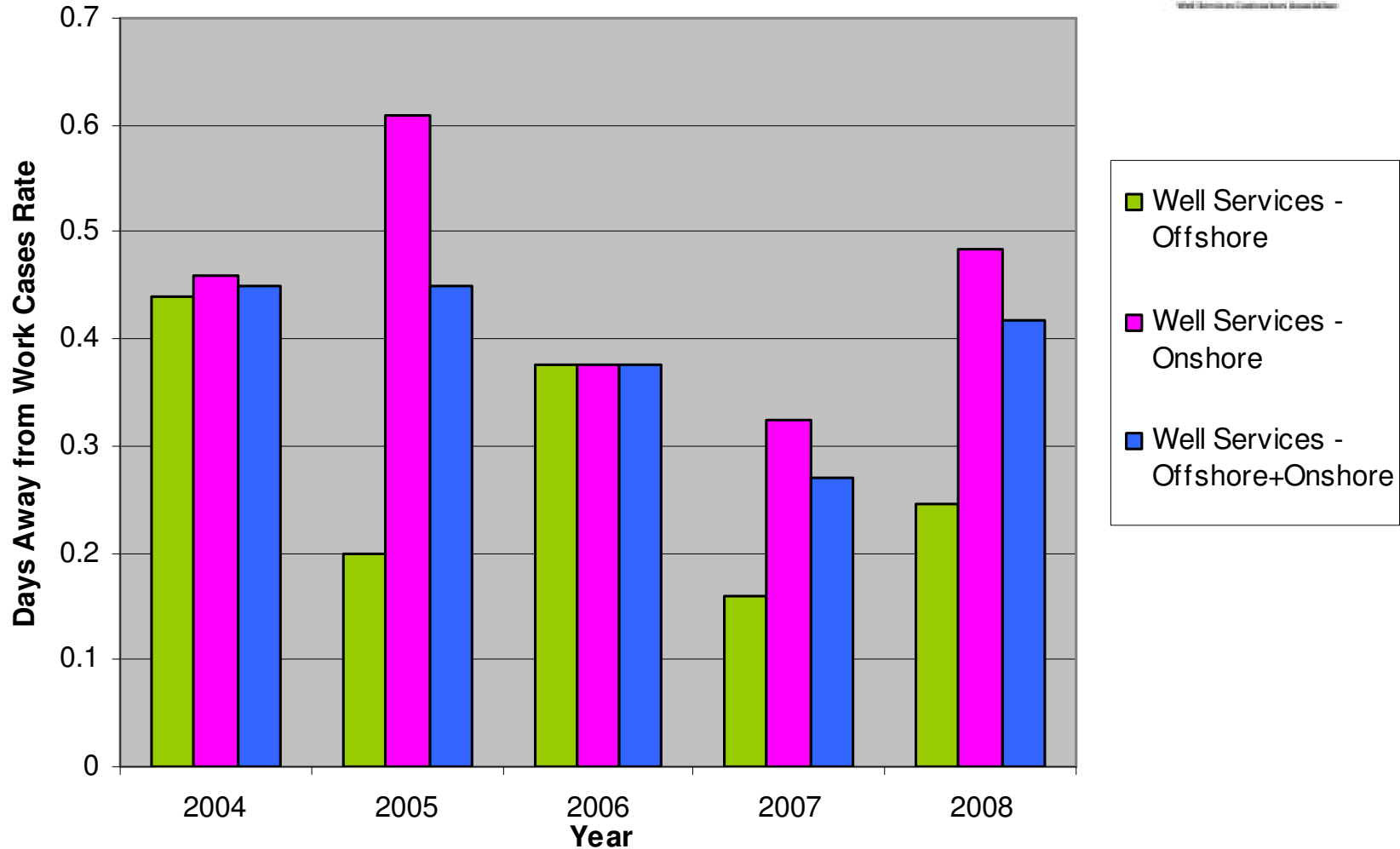
## Days Lost Due to Injury Rates (per 100,000 people)



### Fatal + Major Injury Rates (per 100,000 people)



### Days Away from Work Cases Rate (per 200,000 Hours)



### Total Recordable Incident Rate (per 200,000 Hours)

